

STAVANGER KONSERTHUS

Zetlitz Mainstage Tech Spec

Contacts

PRODUCTION MANAGERS

Björg Ellen Hauge

+47 959 14 177

beh@stavanger-konserthus.no

Maren Berg-Thomassen

|+47 402 01 681

mbt@stavanger-konserthus.no

Terje Harlo

|+47 917 02 633

th@stavanger-konserthus.no

HEAD OF LIGHTS & AV

Nils Foss

+47 911 35 844

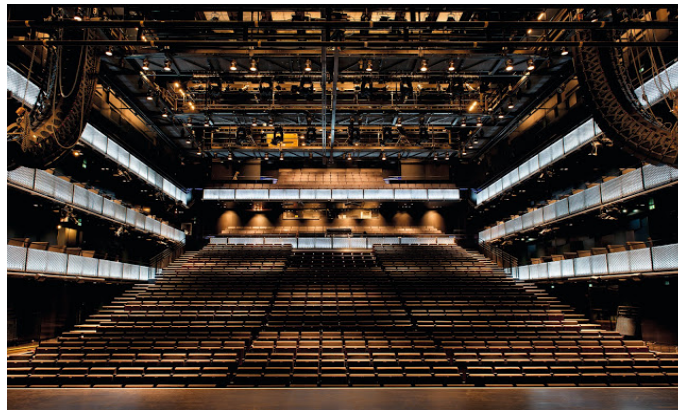
nfo@stavanger-konserthus.no

HEAD OF STAGE

Ricardo Regêncio

+47 415 70 759

rr@stavanger-konserthus.no



Zetlitz Mainstage

820 Seated

Please check pricelist for updated prices

Content

- Page 3 Stage Spec
- Page 4 Light Spec
- Page 5 Sound Spec
- Page 6 Microphone list
- Page 7 AV
- Page 8 Standard Flybar setup
- Page 9 Stage Drawing
- Page 10 Light Drawing
- Page 11 Load Capacity Table



ZETLITZ MAINSTAGE

Stage

Stage height	0 cm (1 st row: -80 cm)	
Floor size	280 m ²	
Floor size (w x d)	20 x 14 m	
Clearance to grid	15 m	
Clearance to fly bars	14,3 m	
Max proscenium (w x d)	17 x 10 m	
Side stage SL	6 x 14 m, 7 m clearance	
Side stage SR	3 x 14 m, 7 m clearance	
Orchestra pit max size:	16,7 x 5 m	
Flybars	46	
Side flybars	1L + 1R	
Point hoists (SWT 1T)	25	8 in use for house PA
Floor capacity	800Kg/m ²	include orchestra and auditorium lifts

Complete black draping available.
Prolyte H40V truss available

Power

- 1 Powerlock 400A - upstage stage left
- 1 CEE 63A 400V 5pol - midstage stage left
- 1 CEE 63A 400V 5pol - midstage stage right
- 1 CEE 63A 400V 5pol - *under midstage stage left*
- 1 CEE 63A 400V 5pol - *under midstage stage right*

EXTRA NIVTEC PODIUM

- 36 200x100cm
- 6 100x100cm
- 12 50x100cm
- 12 50x200cm

EXTRA NIVTEC LEGS

- 50 20cm
- 50 40cm
- 70 60cm
- 70 80/140cm
- 24 40cm for wheels
- 24 60cm for wheels
- 26 80cm for wheels
- 64 Wheels

More accessories are available. Railings, spigots, step legs

Lights

Control

- 2 Grand MA3 Light
- 1 Grand MA2 Light
- Paradigm houselights and Nondim control*
- 20 Pathway Pathport C-Node sACN-DMX

Conventional

- 4 Robert Juliat Aramis Followspot
- 12 Prolights ECLProfile CT+ 15-30° R,G,B,RB,M,A
- 12 Robert Juliat 614SX 16-35°
- 24 Robe Parfect 150 3.8-60° R,G,B,W
- 48 Bright X-LED HD 30° R,G,B,W,A,U,V

Automated

- 4 Martin Encore Performance WRM
- 6 Martin Encore Wash WRM
- 18 Martin Aura PXL
- 19 Robe Esprite Profile *Custom gobo setup*

Effects

- 1 MDG Atmosphere HO
- 1 Antari AF3 FAN
- 1 Look Solution Viper

EXTRA EFFECT LIGHTS*

- 18 Martin Mac Aura
- 16 Astera AX5
- 24 Chauvet CYC1 FC
- 6 Strand Cantata LED FC
- 6 Martin Atomic 3000
- 48 Elation Tri-Brick
- 16 50cm LED Sphere
- 24 30cm LED Sphere

EXTRA CONVENTIONAL LIGHTS*

- 30 Showtec Active Sunstrip
- 12 ADB C103 1Kw PC
- 24 ADB F101 1Kw Fresnel
- 24 ADB C203 2Kw PC
- 6 ADB SH50 5Kw Fresnel
- 12 Robert Juliat 611SX 11-26°
- 10 Robert Juliat 614X 16-35°
- 20 Robert Juliat 613X 28-54°
- 24 ETC Profile 14,19,26,36,50°
- 24 Thomas 4x1000w CYC
- 24 Thomas Par 16
- 30 Par64
- 10 6bar Par64 soca inn/out
- 10 Thomas Par64 floor
- 12 Active 2-Lite
- 12 Robe Patt 2013

**A selection of these according to production needs, size and availability. Please check with production*

Sound

FOH / MON desk*

**A selection of these according to production needs, size and availability. Please check with production*

- 1 Digico SD7
- 1 Digico SD8
- 1 Digico SD10
- 1 Digico SD11

PA

Nexo GeoT flown as L-R

Left / right

- 16 Geo-T 4805
- 2 Geo-T 2815

Delay

- 4 Geo-T 2815
- 3 PS-8

Sub

- 8 RS18-PI

Amps

- 9 Nexo NX 4x4 - LCR
- 1 Nexo NX 4x4 - delay

Front fills

- 8 RCF M55 Speakers
- 2 RCF HPS - 2500 Amps

Monitor / Sidefill / Drumfill*

**A selection of these according to production needs, size and availability. Please check with production*

- 24 PS15R2 for monitors
- 4 PS15R2 for S/D Fills
- 4 PS15R2 for S/D Fills
- 4 RS15C for S/D Fills
- 10 Nexo NX 4x4 in 5 racks

INTERCOM

- 8 Riedel Artist beltpack
- 8 Riedel Acrobat Wireless Beltpack
- 2 Riedel Artist base Station

Microphone`s

*A selection of these according to production needs, size and availability. Please check with production**

Wireless*

- 12 Sennheiser EM - 2050 CW-X
- 28 Sennheiser SK - 2000 CW-X
- 8 Sennheiser SKM - 2000 MMD935 capsule
- 4 Sennheiser SKM - 2001 Shure Beta58 capsule
- 2 Sennheiser SKM - 2002 Neumann 105 capsule
- 14 Sennheiser MMK - 965 capsule
- 28 Sennheiser MKE 1-4 mini lav for belt packs
- 28 Sennheiser HSP2-3 headworn omni for belt packs

Mic's, Stands and DI's*

- 2 AKG D112
- 4 AKG C414
- 16 AKG C480B - CK61-ULS
- 2 Shure beta 57A
- 2 Shure beta 52
- 2 Shure beta 91A
- 6 Shure beta 98 DS
- 12 Shure beta 58
- 10 Shure SM57
- 6 Shure SM58
- 8 Sennheiser MD421
- 6 Sennheiser MD441
- 8 Sennheiser e906
- 10 Sennheiser e904
- 8 Sennheiser MKH40
- 12 Sennheiser e935
- 2 Sennheiser e965
- 4 DPA 4011
- 10 DPA 4099
- 16 Neumann KM184
- 2 Neumann KSM 105
- 2 Audix D6
- 12 Audix ADX-12HC
- 12 Audix ATS-10 (stands for ADX-12HC)
- 30 BSS AR133
- 50 large stands tripod
- 45 small stands W/roundbase
- 5 large stands W/roundbase
- 4 small stands tripod
- 2 large mic stand for OH - choir etc
- 8 K&M 23550 - A/B adapter
- 8 K&M 214/6 Speakerstand tripod

AV

- 1 Panasonic RZ12KEJ (12K Laser)
- 1 ET-D7LE20 Zoom lens 1.7-2.4
- 1 ET-D7LE30 Zoom lens 2.4-4.7
- 1 ET-D75LE5 Fixed lens 0.8

- 1 Christie Roadster 12K
- 1 1.8-2.6:1 Zoom lens
- 1 0.67 Fixed lens

- 1 Christie DHD800

Projection screen, moveable on flybars (9,35 x 9,90 m)

EXTRA AV*

- 1 Folding screen 7x4m Back and front projection
- 1 Folding screen 2.27x3.88m
- 2 32" screens
- 2 46" screens
- 1 Barco Image Pro2
- 1 AnalogWay Saphyre
- 1 Panasonic YFB200 Digital Link

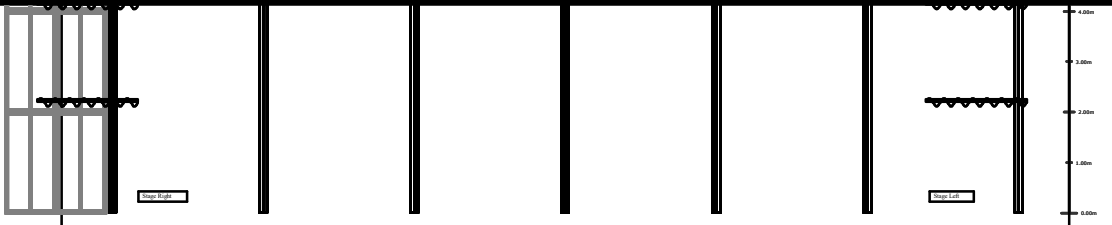
- 1 MicroCue 2 Clicker
- 1 Countdown touch
- 1 Maxi Display for Clock
- 1 CombiLamp

- 1 Yellobrik fiber/SDI Kit
- 4 Blackmagic HDMI/SDI Kit
- 2 JMC SDI Splitters
- 2 JMC Multi to SDI
- 2 JMC SDI to HDMI
- 5 50m SDI cable

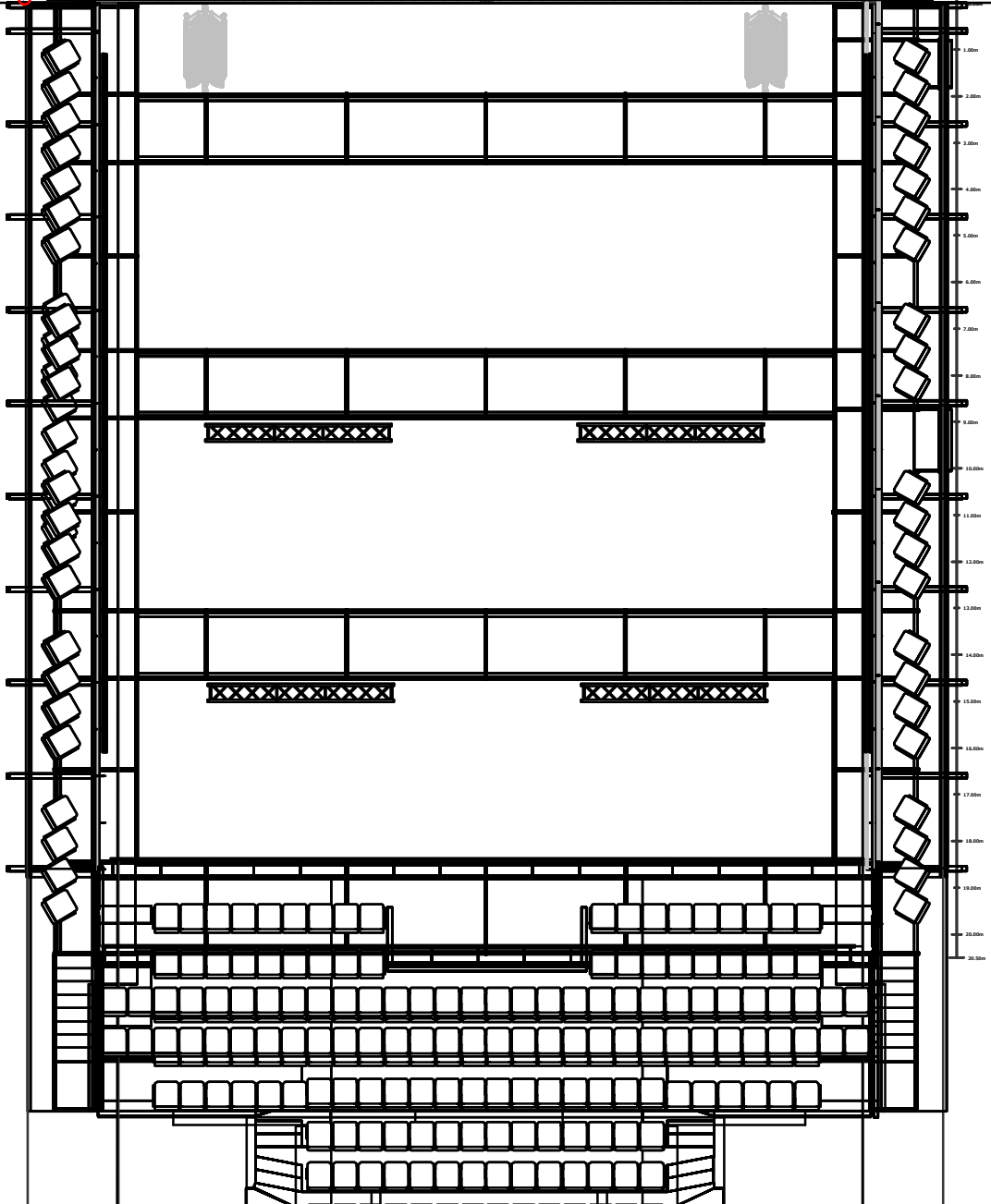
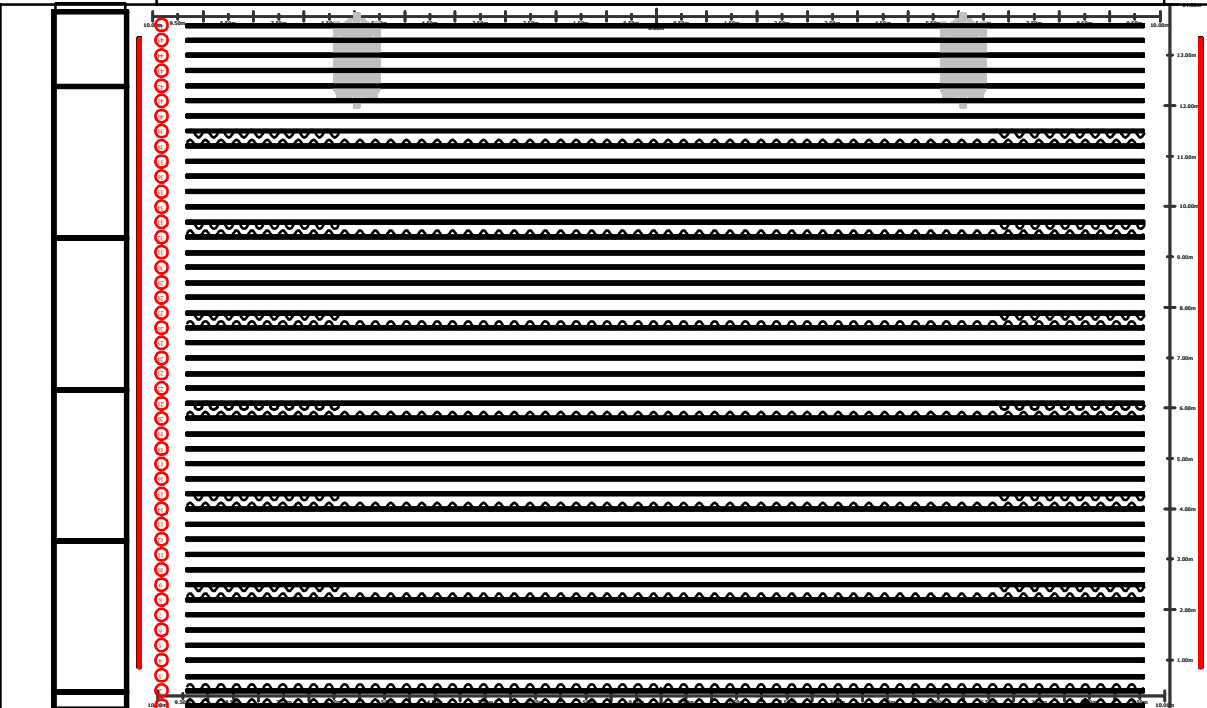
**A selection of these according to production needs, size and availability. Please check with production*

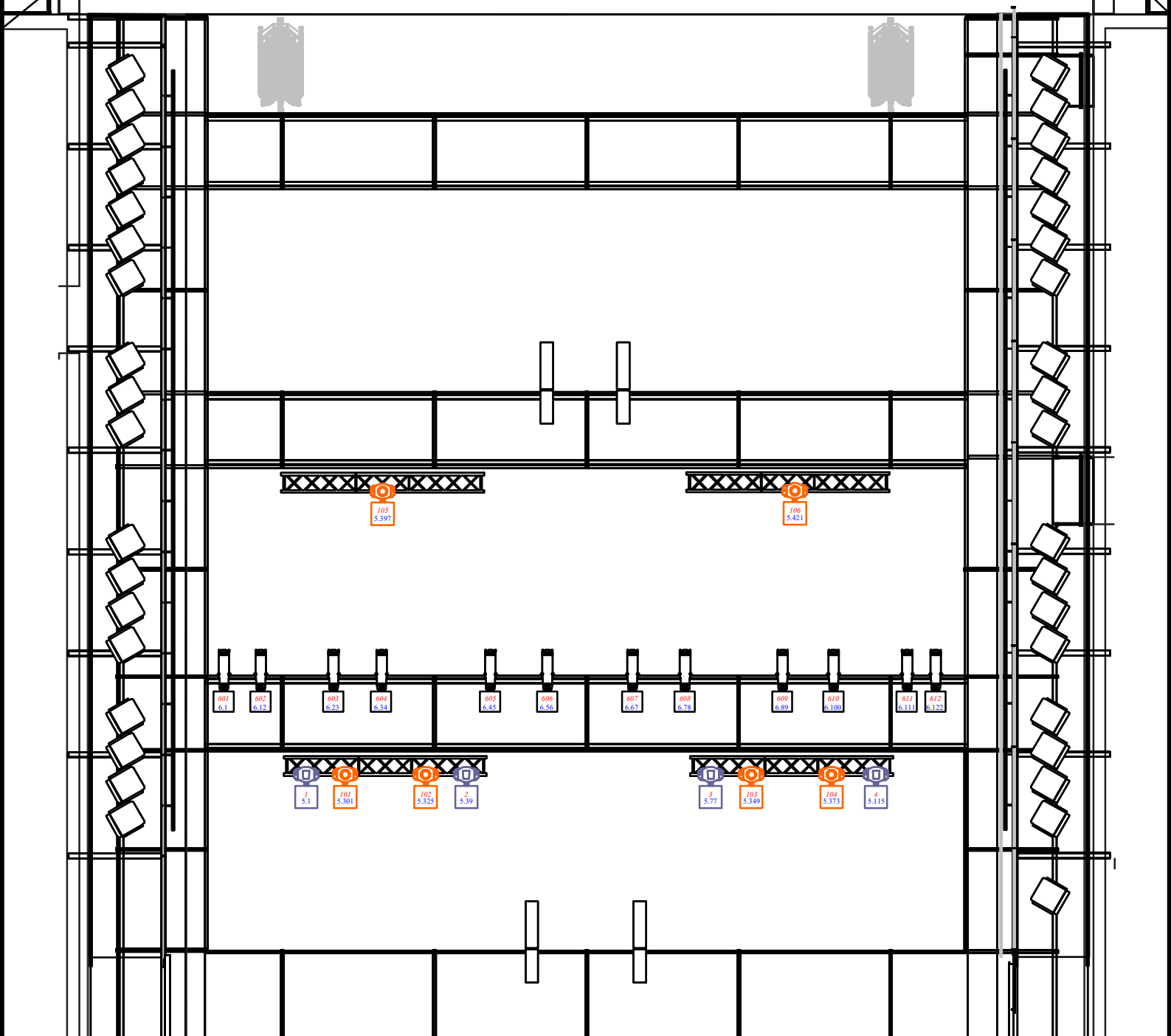
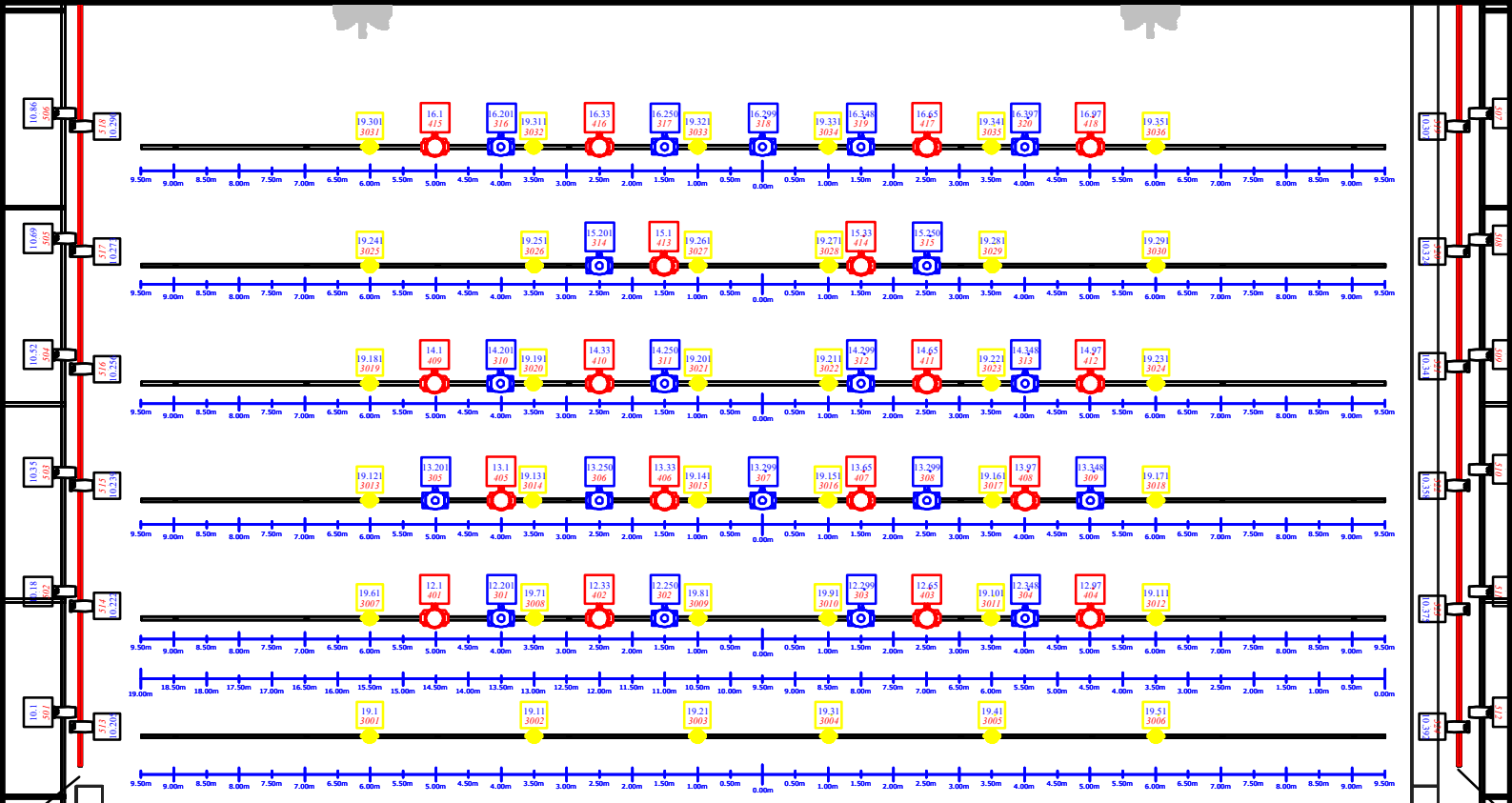
Standard Flybar setup

	Notes
1 Black border 4x19m*	* Not removable
2 black border 3x19m*	All flybars have double ø48mm pipe
3 Black front curtain 7.2x19m*	All flybars are 19m wide
4 Cannot be used if front curtain is in use	30cm distance between flybars
5 LX1	Maximum speed 1,8m/s
6	Wagner Biro controll
7	Only to be operated be qualified personel
8 Black border 3x19m	
9 Black legs 7,5x3m	
10	Capacity:
11 LX2	500Kg distributed
12	200Kg under wires and 100Kg between
13	
14 Black border 3x19m	
15 Black legs 7,5x3m	
16	
17 LX3	
18	
19	
20 Black border 3x19m	
21 Black legs 7,5x3m	
22	
23 LX4	
24	
25	
26 Black border 3x19m	
27 Black legs 7,5x3m	
28	
29 LX5	
30	
31	
32 Black border 3x19m	
33 Black legs 7,5x3m	
34	
35 LX6	
36	
37	
38 Black border 3x19m	
39 Black legs 7,5x3m	
40	
41	
42	
43	
44	
45	
46 Max height to drive during performance is 9,5m	



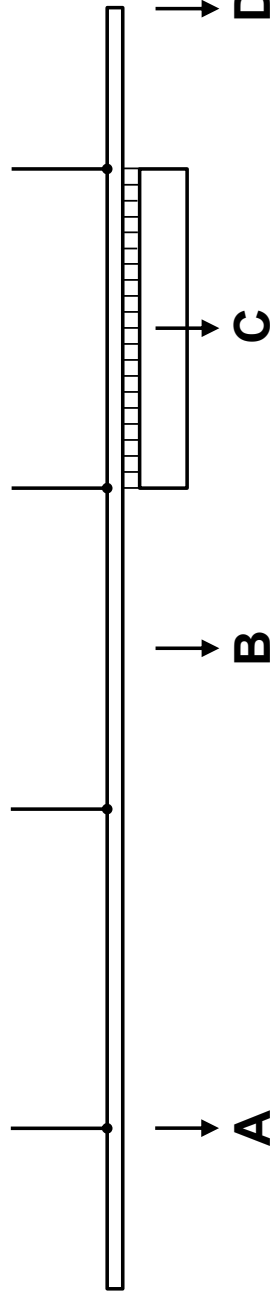
- Empty
- Empty
- Empty
- Empty
- Empty
- Empty
- Empty
- Legs 7.5*3m
- Border 3m
- Empty
- Empty
- LX 6
- Empty
- Legs 7.5*3m
- Border 3 m
- Empty
- Empty
- Empty
- Legs 7.5*3m
- Border 3 m
- Empty
- Empty
- LX 4
- Empty
- Legs 7.5*3m
- Border 3 m
- Empty
- Empty
- LX 3
- Empty
- Legs 7.5*3m
- Border 3 m
- Empty
- Empty
- LX 2
- Empty
- Legs 7.5*3m
- Border 3 m
- Empty
- Empty
- LX 1
- Front Curtain
- Border 3m
- Border 3 m





Load Capacity Table

Nytt Konserthus i Stavanger - Flerbrukssal



	CAT Selection No.	SWL - Safe Working Load	A	B	C	D
			(Concentrated load under one suspension)	(Concentrated load between two suspensions)	(Uniformly distributed load between two suspensions)	(Concentrated load at bar end)
Flybar 1 ... 46	fb 1 ... fb46	max. 300 kg at 1,8 m/s max. 500 kg at 1,2 m/s	200 kg	100 kg	200 kg	100 kg
Gallery bar left / right	gbl / gbr	800 kg	200 kg	100 kg	200 kg	100 kg
Point hoist 1 ... 17	ph1 ... ph17	1000 kg	-	-	-	-
Point hoist 18 ... 21 (PA hoists)	ph18 ... ph21	1000 kg	-	-	-	-
Mixer hoist	mh	500 kg	-	-	-	-
Point hoist 51 ... 62 (Backstage)	ph51 ... ph62	1000 kg	-	-	-	-
Chandelier hoist 1 ... 8	ch1 ... ch8	250 kg	-	-	-	-
Front Curtain	fc					
Projection Screen	ps					
Safety Wall	sw					
Balcony Light Frame	manual	250 kg	100 kg	50 kg	100 kg	5 kg

Permanent load only – additional loading forbidden!

Moving loads above persons is forbidden! Suspended loads above persons are allowed only in interlocked position.

The sum of the individual loads shall not exceed the Safe Working Load.