

STAVANGER KONSERTHUS

Kuppelhallen Tech Spec

Contacts

PRODUCTION MANAGERS

Björg Ellen Hauge

+47 959 14 177

beh@stavanger-konserthus.no

Maren Berg-Thomassen

|+47 402 01 681

mbt@stavanger-konserthus.no

Terje Harlo

|+47 917 02 633

th@stavanger-konserthus.no

HEAD OF LIGHTS & AV

Nils Foss

+47 911 35 844

nfo@stavanger-konserthus.no

HEAD OF STAGE

Ricardo Regêncio

+47 415 70 759

rr@stavanger-konserthus.no



Kuppelhallen

1050 Seated

Please check pricelist for updated prices

Content

- Page 3 Stage Spec
- Page 4 Light Spec
- Page 5 Sound Spec
- Page 6 Microphone list
- Page 7 AV and Intercom
- Page 8 Stage Drawing
- Page 9 Light Drawing
- Page 10 Standard lighting patch
- Page 11 Load Capacity Table



STAVANGER KONSERTHUS

Stage

Floor Size

Width downstage 23m
Width upstage 15m
Depth centre 12m

Clearance

	Ceiling	Flybars
Front stage	10m	9,6m
Midle stage	7.9m	7,3m
Back stage	5.9m	5,9m

Flybars 19

Side Flybars 1 stage Left 1 Stage Right

Complete black draping available

EXTRA NIVTEC PODIUM

12 200x100cm
6 100x100cm
12 50x100cm

EXTRA NIVTEC LEGS

24 20cm
24 40cm
24 60cm
24 80-140cm

More accessories are available. Railings, spigots, step legs

Power

1 125A CEE 400V 5pol* Downstage Stage Right

**125A is also used for dimmers and Nondim Standard rigg*

1 63A CEE 400V 5pol* Midstage Stage Left

**63A is also used for dimmers and Nondim Standard rigg*

1 63A CEE 230V 4pol Upstage Stage Right

1 63A CEE 230V 4pol Upstage Stage Left

1 32A CEE 400V 5pol Outside transformer for Nightliners

Lights

Control

- 1 Grand MA 2 Light
- 1 *ELC sidekick for houselights and NonDim*
- 12 Pathway Pathport C-Node sACN-DMX

Conventional

- 32 Niethammer HPZ 115D 1Kw zoom profile
- 41 ETC S4 Parnel
- 6 Active 2-Lites

Automated

- 8 Martin Mac 700 Profile
- 12 Martin Mac 700 Wash
- 12 Martin Mac 250 Wash
- 6 Martin Mac 600E
- 6 Martin Mac 500E

Effects

- 1 MDG Atmosphere Atme
- 1 Look Solution Fan

EXTRA EFFECT LIGHTS

- 24 Martin Rushpar2
- 48 Elation Tri-Brick
- 12 Astera AX5

EXTRA CONVENTIONAL LIGHTS

- 24 Par64
- 12 Niethammer HPZ 115D
- 12 Strand 1Kw Fresnel
- 6 Strand 2Kw Fresnel

Sound

PA

Meyer Sound MTS-4

Left / right

6 MS MTS - 4 SP

6 MS UPA - 1 WCL

Delay

4 MS UPA-1

Sub

2 MS 700 HP SW

Amps

5 Crest Audio 4001

2 Crest Audio 5850

Front fills

7 JBL MS26

1 Crown CTs1200

Mon / Sfill / Dfill

6 MS UM - 1P

4 MS UM - 100P

2 MS CQ - 1P

Moveable desks - dyn - fx

1 DigiCo SD8

1 TC M3000

1 Yamaha SPX2000

2 DBX 166A

Wireless

- 4 Shure UR4D dual receivers
- 8 Shure UR1 body pack
- 4 Shure UR2 HH w/beta 58
- 8 DPA 4066 headband mic's

Mic's and Di's

- 6 AKG C 535 EB
- 1 AKG D12 E
- 1 AKG D112
- 3 AKG 452 EB
- 8 AKG 451 EB
- 5 AKG CK1
- 4 AKG CK3
- 2 AKG CK5 1
- 2 C - duser CX
- 3 Sennheiser MD421 U
- 4 Schoeps CMC6UG
- 2 Neumann KMS 105
- 6 Shure SM57
- 12 Shure SM58
- 6 Shure beta 58 A
- 6 Shure beta 87
- 1 Shure beta 91
- 4 Shure SM98
- 2 AKG C414 B-ULS
- 2 AKG 747
- 1 Audio Technica ATM25
- 1 Electro Voice Re20
- 2 Beyer Dynamic M88
- 6 BSS AR133
- 8 KT DN100
- 6 Alphonson SM 50
- 4 Alphonson SM 60

AV

- 1 Christie Roadster HD12K
- 1 2.6-4.2:1 HD Zoom Lens
- 1 4.1-6.9:1 HD Zoom Lens

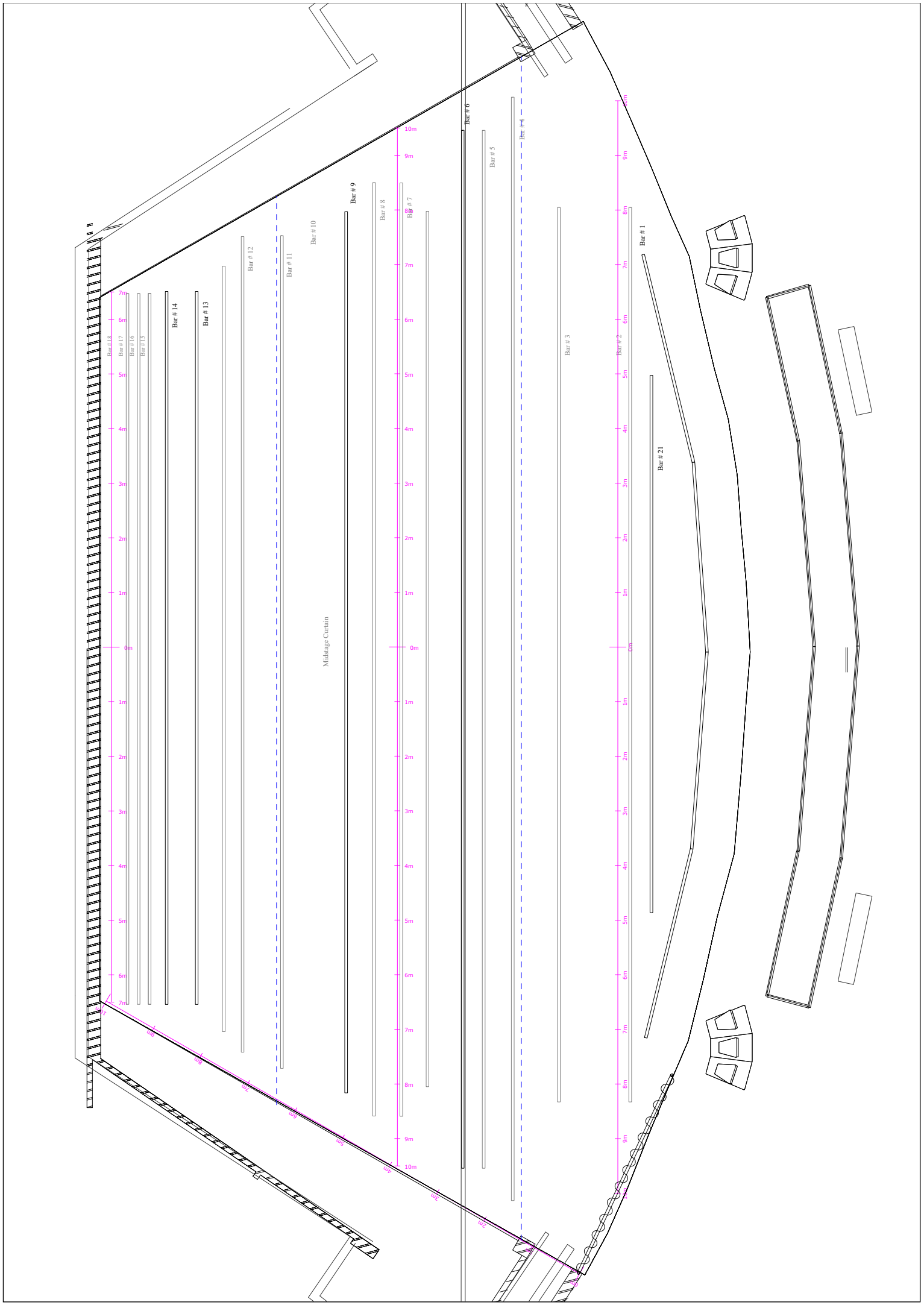
Projection screen, fixed position (11x 5 m)

EXTRA AV

- 1 Yellobrik fiber/SDI kit

INTERCOM

- 2 GreenGO 32ch Desk Station
- 6 GreenGO Beltpack
- 6 GreenGO Wireless Beltpack
- 3 GreenGO Beacon



STAVANGER KONSERTHUS

Kuppelhallen

Venue: Kuppelhallen
Show: Standard Rigg 19

Light Designer: Nils Foss
Mail: nf@stavanger-konserthus.no
Cell: +47 911 35 844

STAVANGER KONSERTHUS

Kuppelhallen Notes

- Grand MA2 Light
- SACN Network
- Patport signal distribution
- MDG Atmosphere A TME

- Stagmanager have external controller for houselights and NonDim
- Nondim for Mac500 on univers 5 ch507

Kuppelhallen stand

Symbol	Name	Count	Make	#Channels	Lamp
	Mac 700 Wash	12	16-BH	16	HT1700W04-75
	Mac 700 Profile	8	16-BH	23	HT1700W04-75
	Mac 250 Wash	12	16-BH	13	MSR5752
	Mac 500	6	2	12	MSR5752
	Mac 500	6	2	14	MSR5752
	Stage Liner 2 DMX	6		1	DKK
	HPZ 11SD	32		1	T:19 200V
	Source 4 P/Abnel	41		1	HPL 75W/250V
	Inpre 100kg	60		4	LED

Martin Mac 700 Wash

Martin Mac 700 Profile



Patch univers 4/16

Color Channel Patch

Patch univers 4/16

Color Channel Patch

Patch univers 4/16

Color Channel Patch

Patch univers 4/16

Color Channel Patch

Patch univers 4/16

Color Channel Patch

Patch univers 4/16

Color Channel Patch

Patch univers 4/16

Color Channel Patch

Patch univers 4/16

Color Channel Patch

Patch univers 4/16

Color Channel Patch

Patch univers 4/16

Color Channel Patch

Patch univers 4/16

Color Channel Patch

Patch univers 4/16

Color Channel Patch

Patch univers 4/16

Color Channel Patch

Patch univers 4/16

Color Channel Patch

Patch univers 4/16

Color Channel Patch

Patch univers 4/16

Color Channel Patch

Patch univers 4/16

Color Channel Patch

Patch univers 4/16

Color Channel Patch

Patch univers 4/16

Color Channel Patch

Patch univers 4/16

Color Channel Patch

Patch univers 4/16

Color Channel Patch

Patch univers 4/16

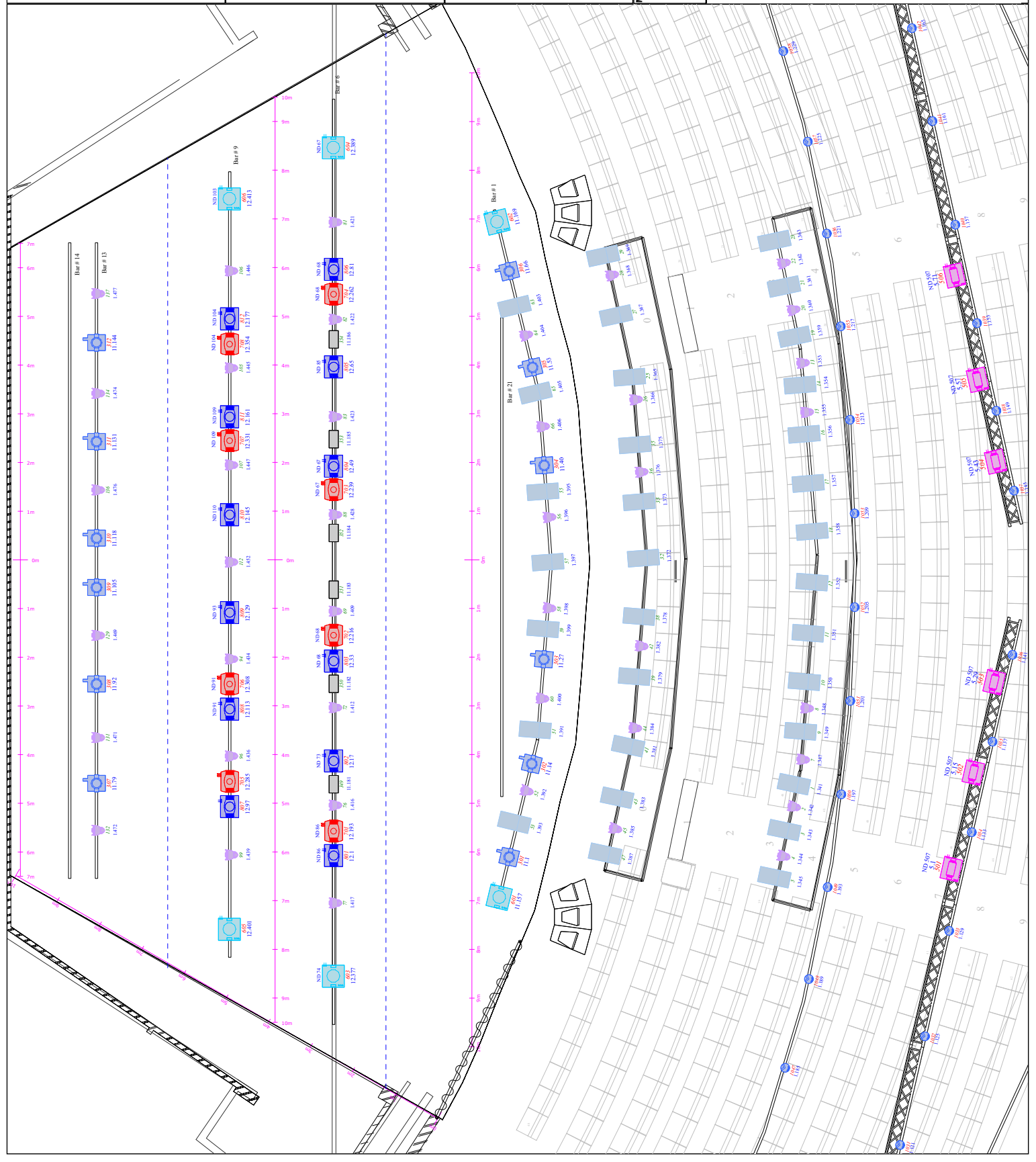
Color Channel Patch

Patch univers 4/16

Color Channel Patch

Patch univers 4/16

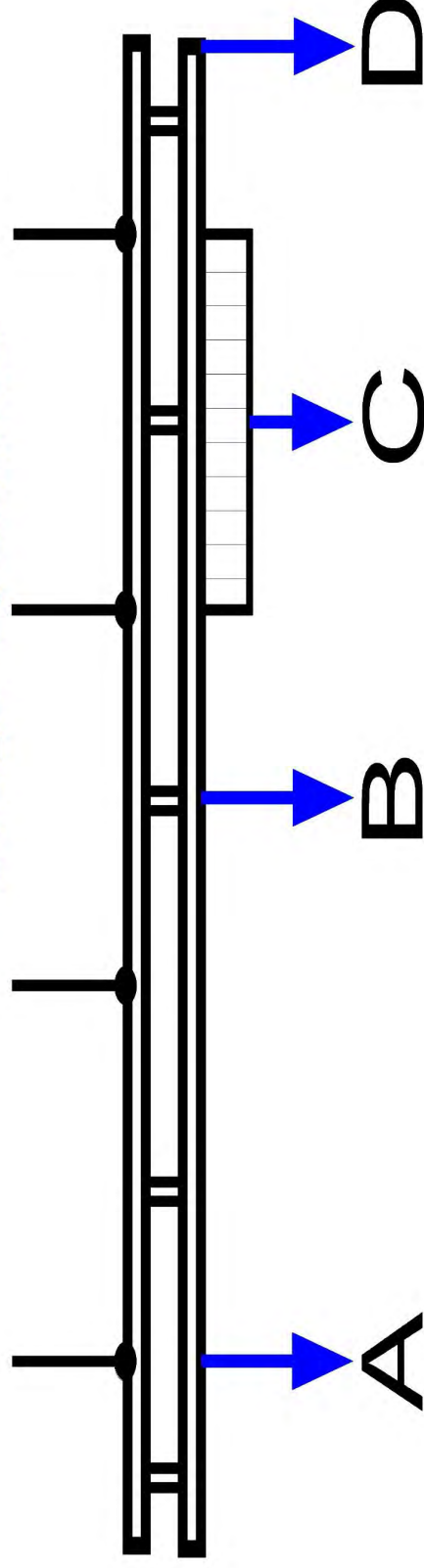
Color Channel Patch



Load Capacity Table

Stavanger Konserthouse - Kuppelhallen

wagner biro
stage systems



	CAT Selection No.	SWL - Safe Working Load	A (Concentrated load under one suspension)	B (Concentrated load between two suspensions)	C (Uniformly distributed load between two suspensions)	D (Concentrated load at bar end)
Lighting Bars (DOUBLE TUBE)	1 LX1, 6 LX2,	550 kg	150 kg	100 kg	200 kg/m	50 kg
	9 LX3, 13 LX4,					
	14 Cyclo, 21					
	2 ... 5					
	7 ... 8					
Fly Bars (SINGLE TUBE)	10 ... 12	600 kg	B,C,D according to Manufacturer – DELSTAR ENGINEERING LTD	Permanent load only - additional loading forbidden!		
	15 ... 20					
	31					
	32					
Acoustic Reflector front	41					
Acoustic Reflector middle	42					
Projection screen	51					

The sum of the individual loads shall not exceed the Safe Working Load.