

STAVANGER KONSERTHUS

Kuppelhallen Tech Spec

Contacts

PRODUCTION MANAGERS

Björg Ellen Hauge

+47 959 14 177

beh@stavanger-konserthus.no

Maren Berg-Thomassen

|+47 402 01 681

mbt@stavanger-konserthus.no

Terje Harlo

|+47 917 02 633

th@stavanger-konserthus.no

HEAD OF LIGHTS & AV

Nils Foss

+47 911 35 844

nfo@stavanger-konserthus.no

HEAD OF STAGE

Ricardo Regêncio

+47 415 70 759

rr@stavanger-konserthus.no



Kuppelhallen

1050 Seated

Please check pricelist for updated prices

Content

- Page 3 Stage Spec
- Page 4 Light Spec
- Page 5 Sound Spec
- Page 6 Microphone list
- Page 7 AV
- Page 8 Stage Drawing
- Page 9 Light Drawing
- Page 10 Load Capacity Table



Stage

Floor Size

Width downstage 23m
Width upstage 15m
Depth centre 12m

Clearance

	Ceiling	Flybars
Front stage	10m	9,6m
Midle stage	7.9m	7,3m
Back stage	5.9m	5,9m

Flybars 19
Side Flybars 1 stage Left 1 Stage Right

Complete black draping available - No Borders

EXTRA NIVTEC PODIUM

14 200x100cm
6 100x100cm
12 50x100cm

EXTRA NIVTEC LEGS

24 20cm
24 40cm
24 60cm
24 80-140cm
24 Wheels

More accessories are available. Railings, spigots, step legs

Power

1 125A CEE 400V 5pol*	Downstage Stage Right
<i>*125A is also used for dimmers and Nondim Standard rigg</i>	
1 63A CEE 400V 5pol*	Midstage Stage Left
<i>*63A is also used for dimmers and Nondim Standard rigg</i>	
1 63A CEE 230V 4pol	Upstage Stage Right
1 63A CEE 230V 4pol	Upstage Stage Left
1 32A CEE 400V 5pol	Outside transformer for Nightliners

Lights

Control

- 1 Grand MA 2 Light
- 1 ELC sidekick for houselights and NonDim
- 12 Pathway Pathport C-Node sACN-DMX

Conventional

- 32 Niethammer HPZ 115D 1Kw zoom profile
- 6 ADB F101 1Kw Fresnell
- 24 Martin Rushpar 2 RGBW
- 6 Active 2-Lites

Automated

- 18 Martin Mac 700 Profile
- 18 Martin Mac Aura
- 6 Martin Mac 700 Profile Front
- 6 Martin Mac Aura Floor
- 4 Martin Mac 700 Profile Floor

Effects

- 1 MDG Atmosphere Atme
- 1 Antari AF3 Fan

EXTRA EFFECT LIGHTS*

- 18 Martin Mac Aura
- 16 Astera AX5
- 24 Chauvet CYC1 FC
- 6 Strand Cantata LED FC
- 6 Martin Atomic 3000
- 48 Elation Tri-Brick
- 16 50cm LED Sphere
- 24 30cm LED Sphere

EXTRA CONVENTIONAL LIGHTS*

- 30 Showtec Active Sunstrip
- 12 ADB C103 1Kw PC
- 24 ADB F101 1Kw Fresnel
- 24 ADB C203 2Kw PC
- 6 ADB SH50 5Kw Fresnel
- 12 Robert Juliat 611SX 11-26°
- 10 Robert Juliat 614X 16-35°
- 20 Robert Juliat 613X 28-54°
- 24 ETC Profile 14, 19, 26, 36, 50°
- 24 Thomas 4x1000w CYC
- 24 Thomas Par 16
- 30 Par64
- 10 6bar Par64 soca inn/out
- 10 Thomas Par64 floor
- 12 Active 2-Lite
- 12 Robe Patt 2013

**A selection of these according to production needs, size and availability. Please check with production*

**All extra lights are located in other venue.*

Sound

PA

Meyer Sound MTS-4

Left / right

6 MS MTS - 4 SP

6 MS UPA - 1 WCL

Delay

4 MS UPA-1

Sub

2 MS 700 HP SW

Amps

5 Crest Audio 4001

2 Crest Audio 5850

Front fills

7 JBL MS26

1 Crown CTs1200

Mon / Sfill / Dfill

6 MS UM - 1P

4 MS UM - 100P

2 MS CQ - 1P

Moveable desks - dyn - fx

1 DigiCo SD8

1 TC M3000

1 Yamaha SPX2000

2 DBX 166A

INTERCOM

2 GreenGO 32ch Desk Station

6 GreenGO Beltpack

6 GreenGO Wireless Beltpack

3 GreenGO Beacon

Mic's and Di's

6 AKG C 535 EB
1 AKG D12 E
1 AKG D112
3 AKG 452 EB
8 AKG 451 EB
5 AKG CK1
4 AKG CK3
2 AKG CK5 1
2 C - duser CX
3 Sennheiser MD421 U
4 Schoeps CMC6UG
2 Neumann KMS 105
6 Shure SM57
12 Shure SM58
6 Shure beta 58 A
6 Shure beta 87
1 Shure beta 91
4 Shure SM98
2 AKG C414 B-ULS
2 AKG 747
1 Audio Technica ATM25
1 Electro Voice Re20
2 Beyer Dynamic M88
6 BSS AR133
8 KT DN100
6 Alphaton SM 50
4 Alphaton SM 60
20 large stands tripod
12 small stands W/roundbase
5 large stands W/roundbase
4 small stands tripod
2 large mic stand for OH - choir etc

Wireless

4 Shure UR4D dual receivers
8 Shure UR1 body pack
4 Shure UR2 HH w/beta 58
8 DPA 4066 headband mic's

AV

- 1 Christie Roadster HD12K
- 1 2.6-4.2:1 HD Zoom Lens
- 1 4.1-6.9:1 HD Zoom Lens

Projection screen, fixed position (11x 5 m)

EXTRA AV*

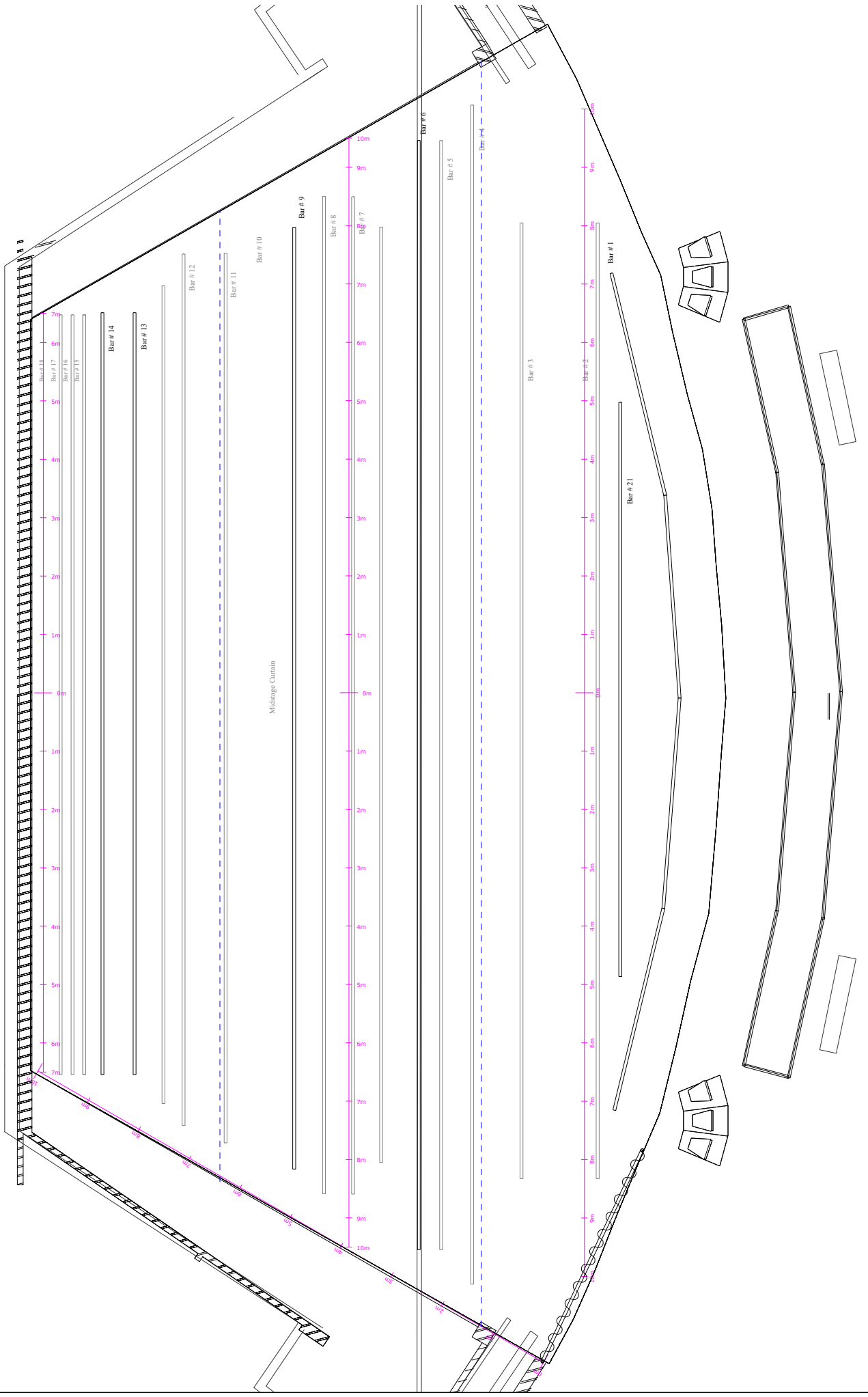
- 1 Folding screen 7x4m Back and front projection
- 1 Folding screen 2.27x3.88m
- 2 32" screens
- 2 46" screens
- 1 Barco Image Pro2
- 1 AnalogWay Saphyre
- 1 Panasonic YFB200 Digital Link

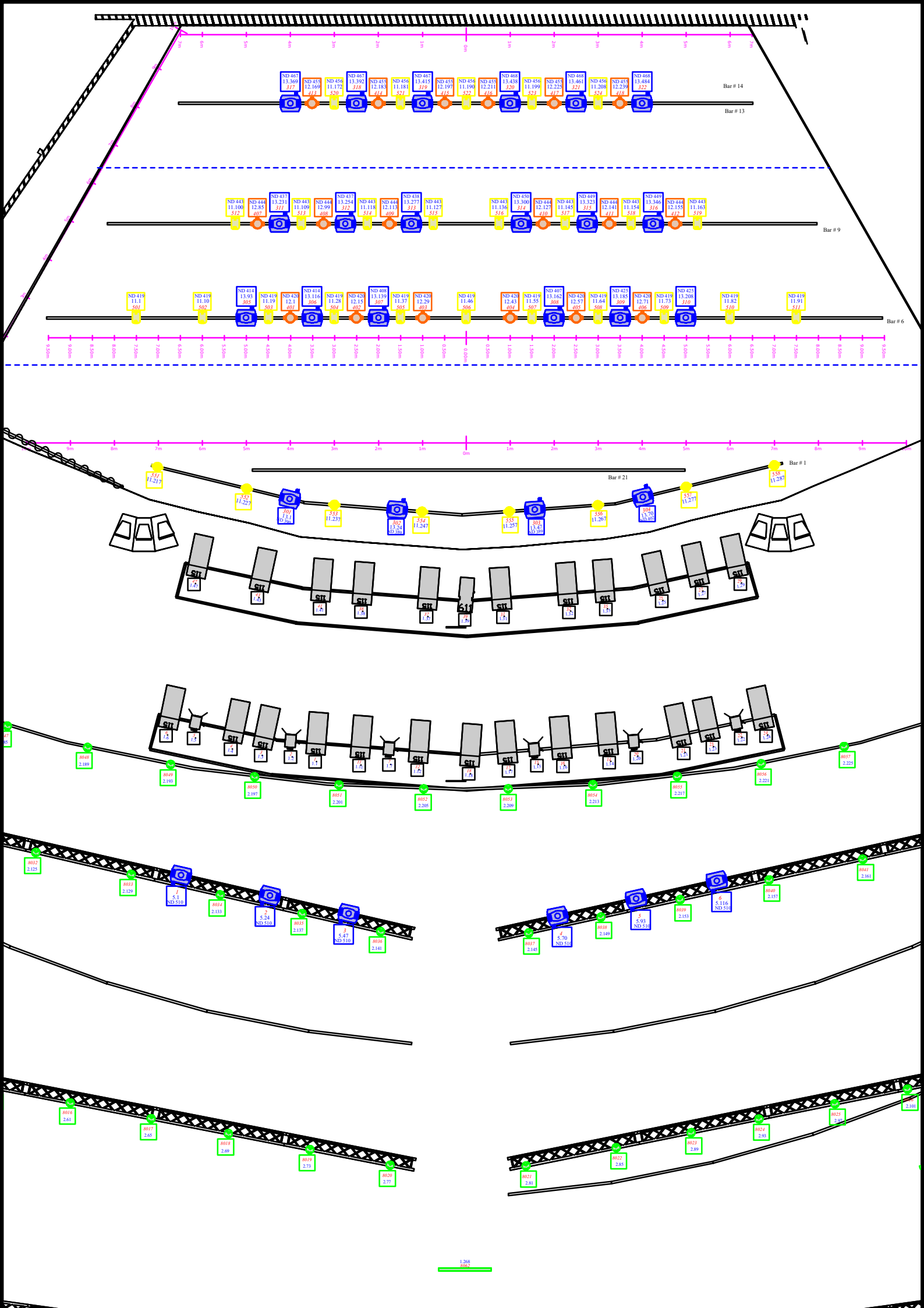
- 1 MicroCue 2 Clicker
- 1 Countdown touch
- 1 Maxi Display for Clock
- 1 CombiLamp

- 1 Yellobrik fiber/SDI Kit
- 4 Blackmagic HDMI/SDI Kit
- 2 JMC SDI Splitters
- 2 JMC Multi to SDI
- 2 JMC SDI to HDMI
- 5 50m SDI cable

**A selection of these according to production needs, size and availability. Please check with production*

**All extra AV are located in other venue.*

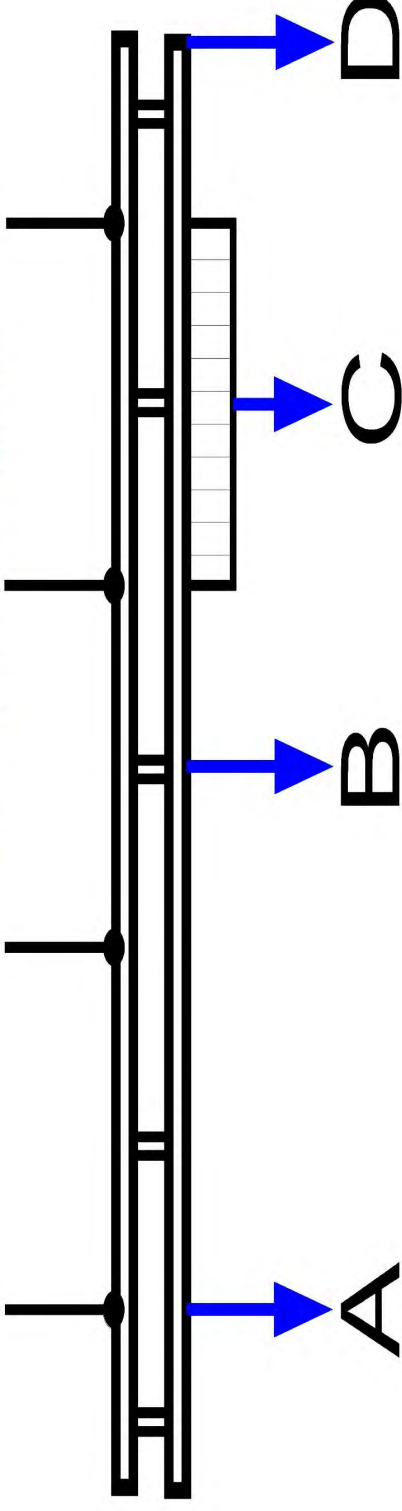




Load Capacity Table

Stavanger Konserthouse - Kuppelhallen

wagner biro
stage systems



	CAT Selection No.	A	B	C	D
		(Concentrated load under one suspension)	(Concentrated load between two suspensions)	(Uniformly distributed load between two suspensions)	(Concentrated load at bar end)
		SWL - Safe Working Load			
Lighting Bars (DOUBLE TUBE)	1 LX1, 6 LX2, 9 LX3, 13 LX4, 14 Cyclo, 21	550 kg	100 kg	200 kg/m	50 kg
Fly Bars (SINGLE TUBE)	2 ... 5 7 ... 8 10 ... 12 15 ... 20	600 kg	B, C, D according to Manufacturer – DELSTAR ENGINEERING LTD		
Front Curtain	31				
Middle Curtain	32				
Acoustic Reflector front	41				
Acoustic Reflector middle	42				
Projection screen	51				

Permanent load only - additional loading forbidden!

The sum of the individual loads shall not exceed the Safe Working Load.