

STAVANGER KONSERTHUS

Fartein Valen Tech Spec

Contacts

PRODUCTION MANAGERS

Björg Ellen Hauge

+47 959 14 177

beh@stavanger-konserthus.no

Maren Berg-Thomassen

|+47 402 01 681

mbt@stavanger-konserthus.no

Terje Harlo

|+47 917 02 633

th@stavanger-konserthus.no

HEAD OF LIGHTS & AV

Nils Foss

+47 911 35 844

nfo@stavanger-konserthus.no

HEAD OF STAGE

Ricardo Regêncio

+47 415 70 759

rr@stavanger-konserthus.no



Fartein Valen

1488 SEATED* | 1234 W/AMPLIFICATION | 1218 W/AMPLIFICATION & DRAPING

*of wich 93 is choir balcony behind stage / 160 on side balconies behind stage front / PA system

Please check pricelist for updated prices

Content

Page 3 Stage Spec

Page 4 Light Spec

Page 5 Sound Spec

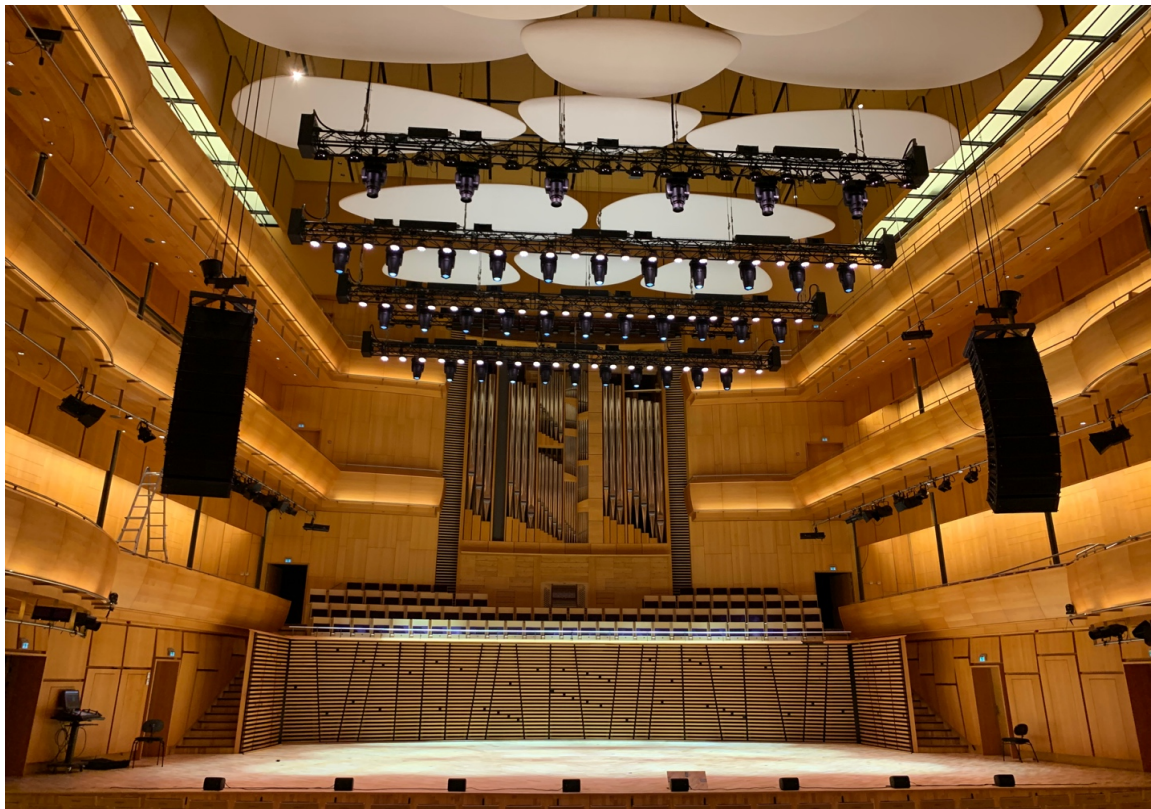
Page 6 Microphone list

Page 7 AV

Page 8 Stage Drawing

Page 9 Light Drawing

Page 10 Load Capacity Table



Stage

Stage height 100 cm
Floor size (surface) 200 m²
Wides x deepest: 17 x 12 m
Max clearance to ceiling 20,60 m
Min clearance to ceiling 16,20 m
Adj. Floor sections 20
Lighting truss 5 Prolyte H40V
Auditorium Truss 12m Prolyte H40V
Point hoist (**SWL 1T**) 11
Acoustic reflector sections 4
Side acoustic curtains 3 levels
Fixed floor capacity 800Kg/m²
Lifts capacity 500Kg/m² static, 250Kg/m² Dynamic

Black back drop, fixed position
Full blackbox draping available
Black carpet available for floor
Front curtain, fixed position
Rehersal curtain, fixed position

Power

1 Powerlock 400A	offstage stage left
1 Powerlock 400A	offstage stage right
1 CEE 63A 400V 5pol	stage left
1 CEE 63A 400V 5pol	stage right
1 CEE 32A 400V 5pol	stage left
1 CEE 32A 400V 5pol	stage right

Lights

Control

- 1 Grand MA 3 Light
Paradigm houselights and Nondim control
- 12 Pathway Pathport C-Node sACN-DMX

Conventional

- 2 Robert Juliat Aramis Followspot
- 10 ADB DN256 9/22° 2500W
- 12 Robert Juliat 614X 16/35° 1200W
- 116 Bright X-LED HD 30° RGBWAUV

Automated

- 8 Martin Encore Performance WRM Front
- 4 Martin Encore Wash WRM
- 16 Robe Esprite Profile *Custom gobo setup*
- 18 Robe Esprite PC
- 6 Martin TW1

Effects

- 1 MDG Atmosphere Atme
- 1 Look Solution Fan

EXTRA EFFECT LIGHTS*

- 18 Martin Mac Aura
- 16 Astera AX5
- 24 Chauvet CYC1 FC
- 6 Strand Cantata LED FC
- 6 Martin Atomic 3000
- 48 Elation Tri-Brick
- 16 50cm LED Sphere
- 24 30cm LED Sphere

EXTRA CONVENTIONAL LIGHTS*

- 30 Showtec Active Sunstrip
- 12 ADB C103 1Kw PC
- 24 ADB F101 1Kw Fresnel
- 24 ADB C203 2Kw PC
- 6 ADB SH50 5Kw Fresnel
- 12 Robert Juliat 611SX 11-26°
- 10 Robert Juliat 614X 16-35°
- 20 Robert Juliat 613X 28-54°
- 24 ETC Profile 14,19,26,36,50°
- 24 Thomas 4x1000w CYC
- 24 Thomas Par 16
- 30 Par64
- 10 6bar Par64 soca inn/out
- 10 Thomas Par64 floor
- 12 Active 2-Lite
- 12 Robe Patt 2013

**A selection of these according to production needs, size and availability. Please check with production*

Sound

PA

FOH / MON desk*

**A selection of these according to production needs, size and availability. Please check with production*

- 1 Digico SD7
- 1 Digico SD8
- 1 Digico SD10
- 1 Digico SD11

PA

Meyer Mica flown as L-R

Left / right

- 20 Meyer Mica

Delay

- 3 PS10R2

Sub

- 4 Meyer 700HP

Amps

- 1 Nexo NX 4x4 - delay

Front fills

- 8 RCF M55 Speakers
- 2 RCF HPS - 2500 Amps

Monitor / Sidefill / Drumfill*

**A selection of these according to production needs, size and availability. Please check with production*

- 24 PS15R2 for monitors
- 4 PS15R2 for S/D Fills
- 4 PS15R2 for S/D Fills
- 4 RS15C for S/D Fills
- 10 Nexo NX 4x4 in 5 racks

INTERCOM

- 8 Riedel Artist beltpack
- 8 Riedel Acrobat Wireless Beltpack
- 2 Riedel Artist base Station

Microphone`s

**A selection of these according to production needs, size and availability. Please check with production*

Wireless*

- 12 Sennheiser EM - 2050 CW-X
- 28 Sennheiser SK - 2000 CW-X
- 8 Sennheiser SKM - 2000 MMD935 capsule
- 4 Sennheiser SKM - 2001 Shure Beta58 capsule
- 2 Sennheiser SKM - 2002 Neumann 105 capsule
- 14 Sennheiser MMK - 965 capsule
- 28 Sennheiser MKE 1-4 mini lav for belt packs
- 28 Sennheiser HSP2-3 headworn omni for belt packs

Mic's, Stands and DI's*

- 2 AKG D112
- 4 AKG C414
- 16 AKG C480B - CK61-ULS
- 2 Shure beta 57A
- 2 Shure beta 52
- 2 Shure beta 91A
- 6 Shure beta 98 DS
- 12 Shure beta 58
- 10 Shure SM57
- 6 Shure SM58
- 8 Sennheiser MD421
- 6 Sennheiser MD441
- 8 Sennheiser e906
- 10 Sennheiser e904
- 8 Sennheiser MKH40
- 12 Sennheiser e935
- 2 Sennheiser e965
- 4 DPA 4011
- 10 DPA 4099
- 16 Neumann KM184
- 2 Neumann KSM 105
- 2 Audix D6
- 12 Audix ADX-12HC
- 12 Audix ATS-10 (stands for ADX-12HC)
- 30 BSS AR133
- 50 large stands tripod
- 45 small stands W/roundbase
- 5 large stands W/roundbase
- 4 small stands tripod
- 2 large mic stand for OH - choir etc
- 8 K&M 23550 - A/B adapter
- 8 K&M 214/6 Speakerstand tripod

AV

- 1 Panasonic PT-RQ22KEJ
- 1 2.6-4.2:1 HD Zoom Lens
- 1 4.1-6.9:1 HD Zoom Lens

Projection screen, fixed position (9,4 x 12,8 m)

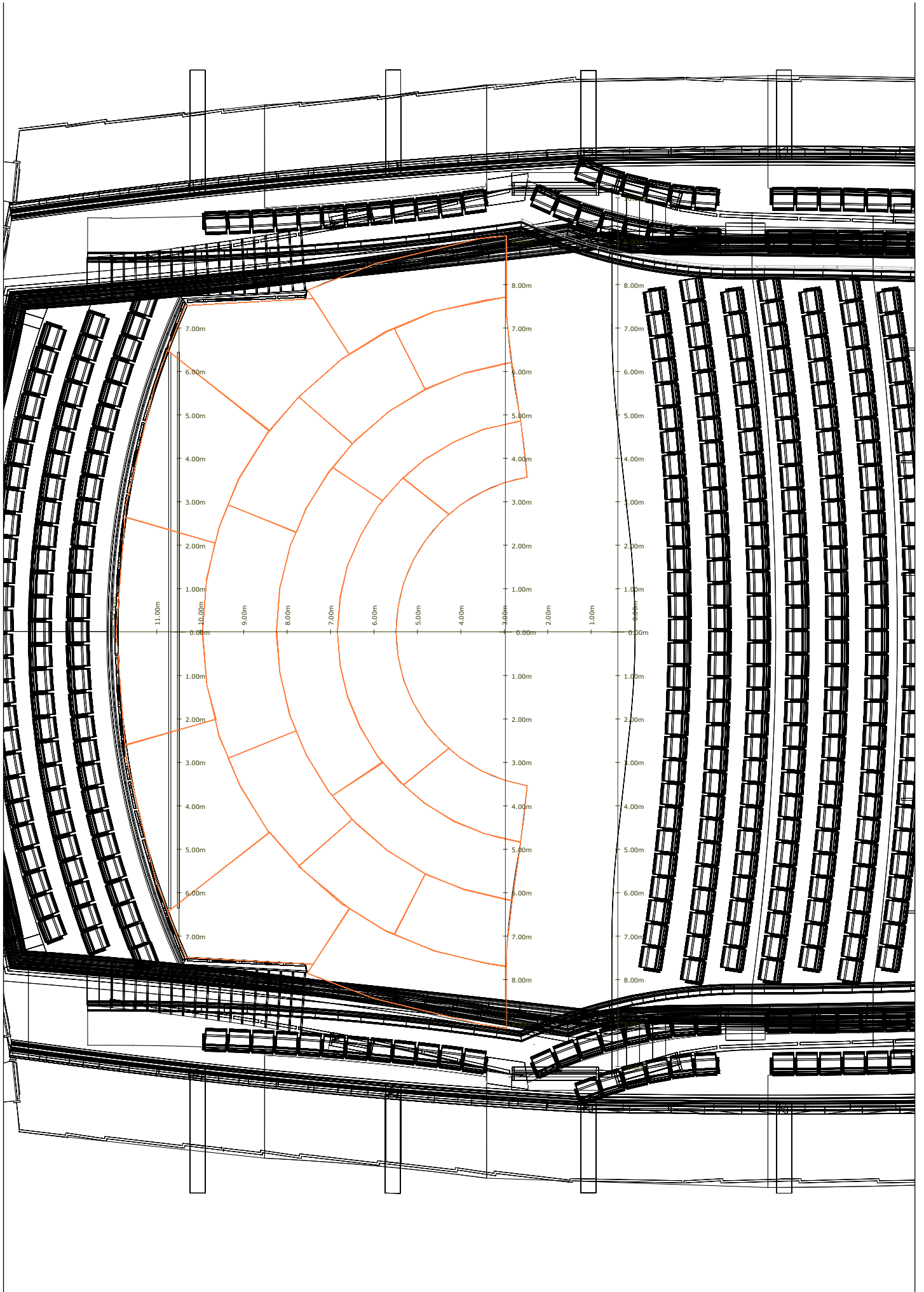
EXTRA AV*

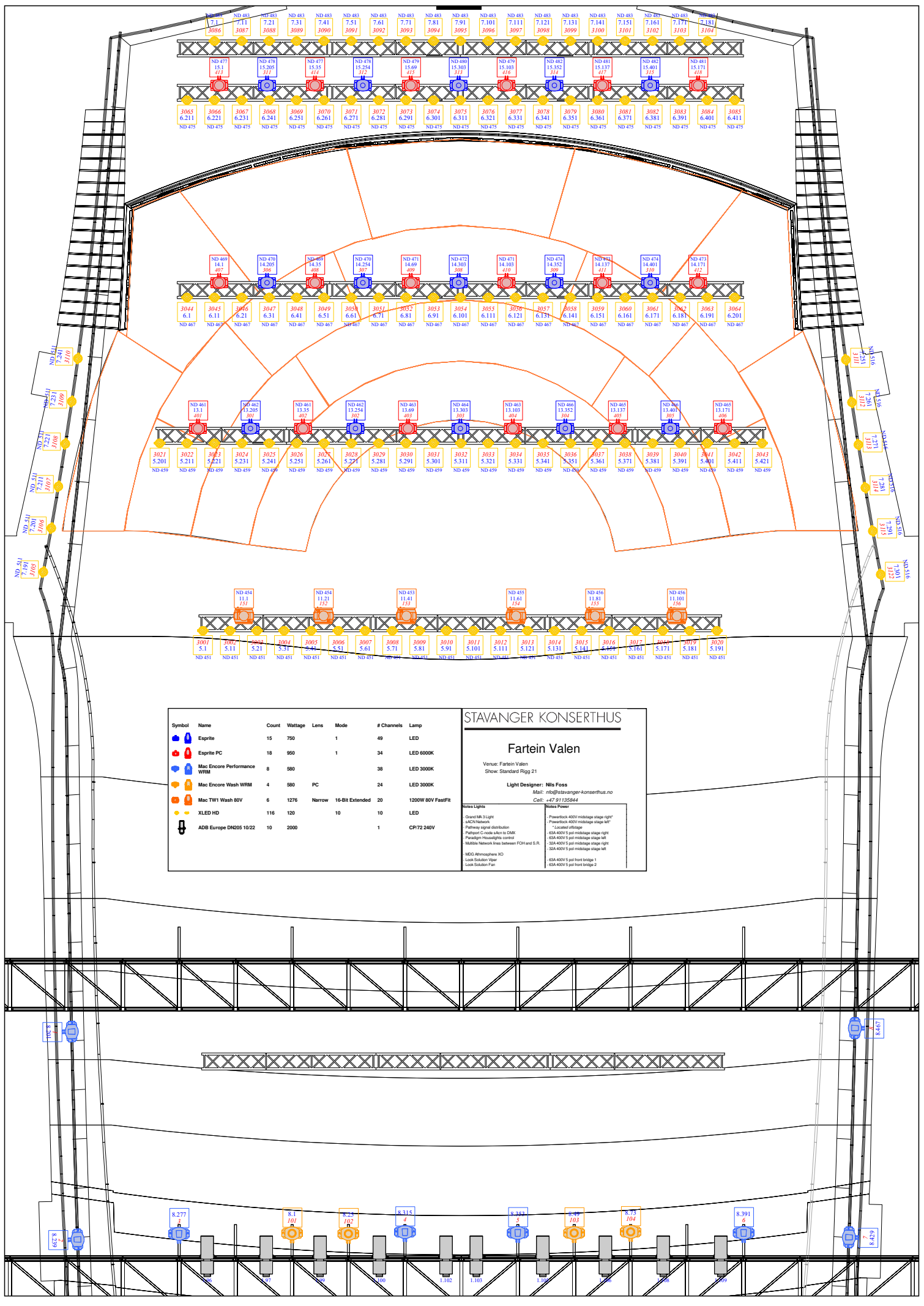
- 1 Folding screen 12x7m Front projection
- 1 Folding screen 7x4m Front and back projection
- 2 32" screens
- 2 46" screens
- 1 Barco Image Pro2
- 1 AnalogWay Saphyre
- 1 Panasonic YFB200 Digital Link

- 1 MicroCue 2 Clicker
- 1 Countdown touch
- 1 Maxi Display for Clock
- 1 CombiLamp

- 1 Yellobrik fiber/SDI Kit
- 4 Blackmagic HDMI/SDI Kit
- 2 JMC SDI Splitters
- 2 JMC Multi to SDI
- 2 JMC SDI to HDMI
- 5 50m SDI cable

**A selection of these according to production needs, size and availability. Please check with production*





Symbol	Name	Count	Wattage	Lens	Mode	# Channels	Lamp
	Esprite	15	750		1	49	LED
	Esprite PC	18	950		1	34	LED 6000K
	Mac Encore Performance WRM	8	980			38	LED 3000K
	Mac Encore Wash WRM	4	980	PC		24	LED 3000K
	Mac TWH Wash 80V	6	1276	Narrow	16-Bit Extended	20	1200W 80V FastFit
	XLED HD	116	120		10	10	LED
	ADB Europe DN205 1022	10	2000			1	CP72 240V

STAVANGER KONSERTHUS

Fartein Valen

Venue: Fartein Valen
 Show: Standard Pligg 21

Light Designer: Nils Foss
 Mail: nils@stavanger-konserthus.no
 Cell: +47 91125864

Notes Lights:

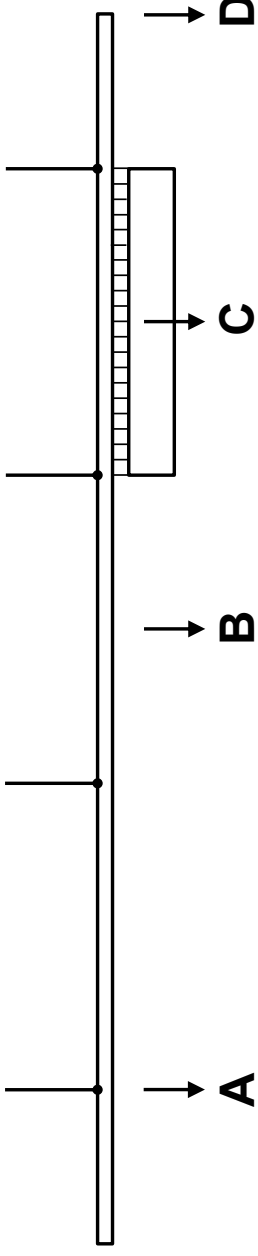
- Grand MA 3 Light
- sACN Network
- Pathway signal distribution
- Pathport C-rack sACN to DMX
- Paradeign Houselight control
- Multiple Network lines between FOH and S.R.
- MDG Atmosphere XD
- Look Station User
- Look Station Fan

Notes Power:

- Powerlock 400V midstage stage right
- Powerlock 400V midstage stage left
- "Locked" midstage
- 48A 400V 5 pin midstage stage right
- 48A 400V 5 pin midstage stage left
- 30A 400V 5 pin midstage stage right
- 30A 400V 5 pin midstage stage left
- 48A 400V 5 pin front bridge 1
- 48A 400V 5 pin front bridge 2

Load Capacity Table

Nytt Konserthus i Stavanger – Orchestra Hall



	CAT Selection No.	SWL - Safe Working Load	A (Concentrated load under one suspension)	B (Concentrated load between two suspensions)	C (Uniformly distributed load between two suspensions)	D (Concentrated load at bar end)
Light truss 1	lx1	800 kg	400 kg	400 kg	400 kg	200 kg
Light trusses 2 ... 6	lx2 ... 6	1000 kg	400 kg	400 kg	400 kg	200 kg
PA hoist - left / center / right	pal / pac / par	1000 kg	-	-	-	-
Point hoists	ph1 ... 17	1000 kg	-	-	-	-

Moveable Ceilings 1 ... 8 mc1 ... mc8 **Max. 3000 kg total load per suspension**

Flaps 3 / 5 / 8	fl3 / fl5 / fl8					
Front curtain	fc					
Back drop curtain	bc					
Rehearsal curtain	rc					
Projection screen winch	psw					
Projection screen	ps					
Reflectors	r1f/r1b/r2/r3/r4					
Reflector R2 (tilting mechanism)	r2t					

Permanent load only – additional loading forbidden!

Manual Flybar (at Moveable Ceiling 2) manual 300 kg 100 kg 50 kg 100 kg 25 kg

Moving loads above persons is forbidden! Suspended loads above persons are allowed only in interlocked position.

The sum of the individual loads shall not exceed the Safe Working Load.